

A close-up photograph of a dark, textured surface, likely a conveyor belt, featuring a regular grid of raised, circular bumps. The lighting creates soft shadows, emphasizing the three-dimensional nature of the profile.

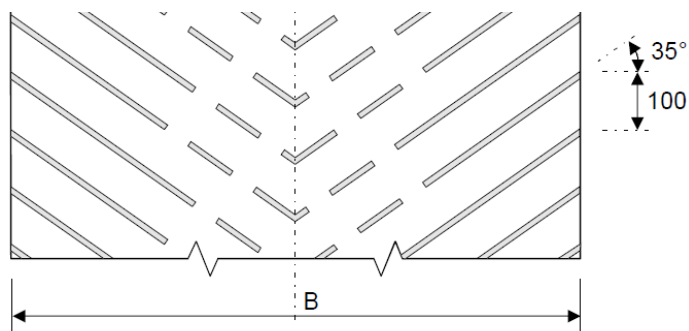
## **Profiled Belts**

ContiTech Finland Oy

**ContiTech**

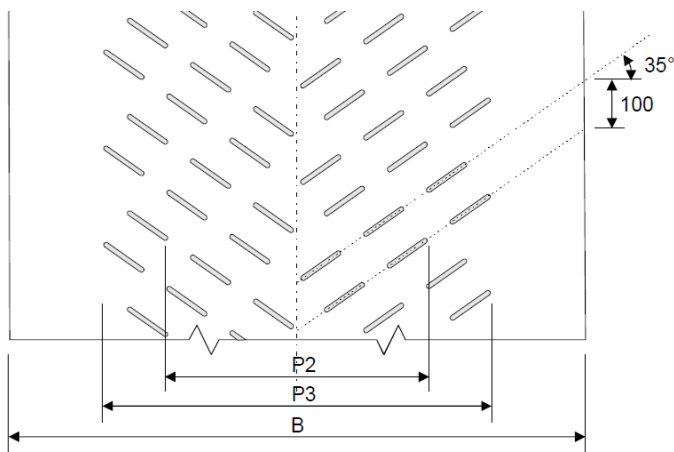
# CONTIFLEX® RIPA 1-2-3

- › Designed e.g. for transportation of wood chips, bark, peat and coal.
- › Angle of inclination is 5° higher than with smooth belts. Max. angle for wood chips 17°.



## RIPA 1

Belt width (B)	400 – 1000 mm
Profile height	6 mm
Profile width	full belt width

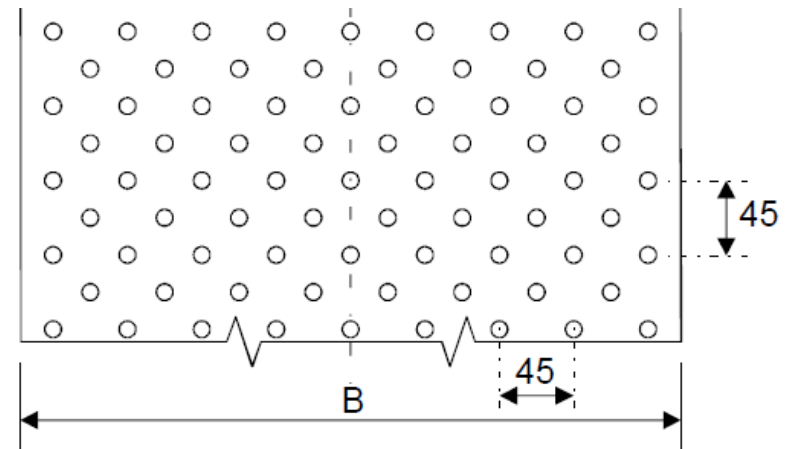
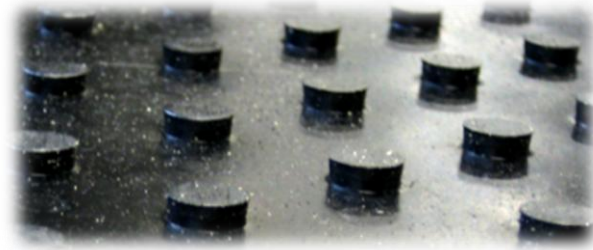


## RIPA 2 & 3

Belt width (B)	Ripa 2	650 – 1000 mm
	Ripa 3	1000 – 1600 mm
Profile height	Ripa 2	7 mm
	Ripa 3	8 mm
Profile width	Ripa 2	530 mm
	Ripa 3	800 mm

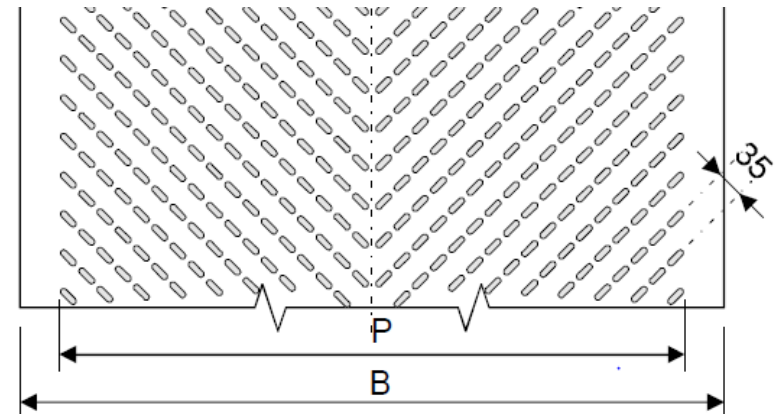
# CONTIFLEX® NASTA

- › Designed e.g. for transportation of wood chips, fiber products and parcelled and lump goods.
- › It is recommended to have 5° higher inclination angle than for smooth belts.
- › Max. Inclination angle
  - › 35°           jute bags, boxes
  - › 30°           paper bags, cardboard boxes, bottle cases
  - › 13°           dry wood blocks
  - › 12°           wood chips
  - › 6°            icy wood blocks
  
- › Belt width (B)           400 – 1600 mm
- › Profile height            3 mm
- › Profile diam.            10 mm
- › Profile width            varies, max. 1100 mm
- › Min.covers               3/1,5 mm



# CONTIFLEX® NAPPULA

- › Designed especially for transportation of wood chips and fiber products but also for parcelled and lump goods.
- › Commonly produced in Y and GPP qualities.
- › It is recommended to have 5° higher inclination angle than for smooth belts.
- › Max. Inclination angle
  - › 35°           jute bags, boxes
  - › 30°           paper bags, cardboard boxes, bottle cases
  - › 13°           dry wood blocks
  - › 12°           wood chips
  - › 6°            icy wood blocks
- › Belt width (B)           400 – 1600 mm
- › Profile height            3 mm
- › Profile width (P)        varies, max. 1400 mm
- › Min. covers              3/1,5 mm



# PROFILES FOR PARCELS AND BULK

## › CONTIFLEX® **GRIPTOP & HERRINGBONE**

- › Designed for transportation of unit loads like bags, boxes, parcels etc. bulk materials.
- › Max. Inclination angle
  - › 35°            jute bags, boxes
  - › 30°            paper bags, cardboard boxes, bottle cases
  - › 13°            dry wood blocks
  - › 6°             icy wood blocks
- › Belt width            Griptop            max.1400 mm  
                                 Herringbone max. 1080 mm
- › Profile width           normally full belt width
- › Profile height           1 mm
- › Min. Covers            Griptop            3 mm on top  
                                 Herringbone 2 mm on top



Griptop



Herringbone

# PROFILES FOR PARCELS AND BULK

## › CONTIFLEX® RIPRO

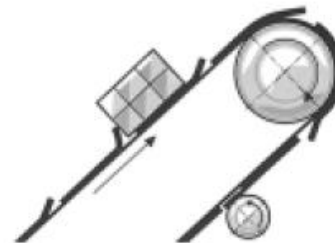
- › Designed for transportation of unit loads. The transverse ribs provide excellent grip on parcels, boxes, bags etc.
- › Belt width                   max. 1000 mm
- › Profile width               full belt width
- › Profile height             approx. 5 mm
- › Min. Covers               5 mm
- › Belt is often produced with sliding fabric on bottom side



Ripro

## › CONTIFLEX® GRIPLIFT

- › Good choice for handling of boxes and parcels.
- › Bending cleats
  - › Cleat height 25 mm
  - › Cleat distance 250 mm



Griplift





# PROFILES FOR PARCELS AND BULK

## › CONTIFLEX® PYRAMIDE 5, PYRAMIDE 12

- › Designed e.g. for transportation of saw-mill products and lump goods.

### › Pyramide 5

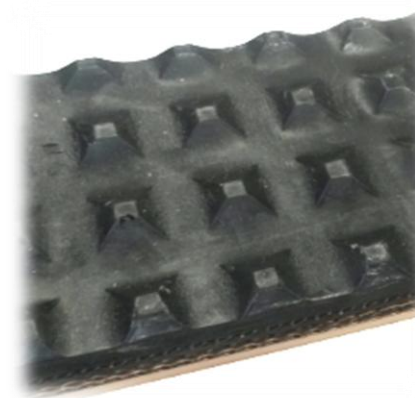
- › Profile size 5 x 5 mm
- › Profile height 2 mm
- › Min.covers 3/1,5 mm
- › Belt width 300 – 1000 mm

### › Pyramide 12

- › Profile size 12 x 12 mm
- › Profile height 3 mm
- › Min.covers 3/1,5 mm
- › Belt width 300 – 1000 mm



Pyramide 5



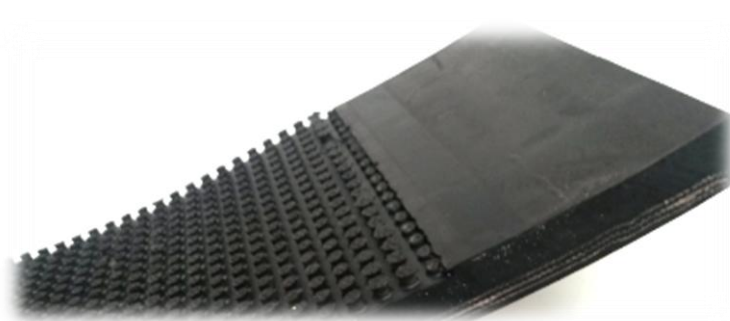
Pyramide 12

# CONTIFLEX® PAPER ROLL BELTS

- › Designed for transportation of paper rolls in paper mills.
- › Reinforced with EP fabric, aramid or Strongflex cords.
- › Available also with Nasta profile
- › Standard width 400 mm, other widths available by request.



PAP W



PAP W Nasta